



Pacific Handbook for Human Rights, Gender Equity and Social Inclusion in Tuna Industries

Core research team: Kate Barclay, Aliti Vunisea, Megan Streeter, Senoveva
Mauli

Other contributors: Natalie Makhoul, Patricia Kailola, Savenaca Kadavi, Luse
Madigibuli, Taniela Ranadali

Commissioned by: the Pacific Community (SPC), in collaboration with the
Pacific Islands Forum Fisheries Agency (FFA), funding from the EU via the Pacific
European Union Marine Partnership (PEUMP)

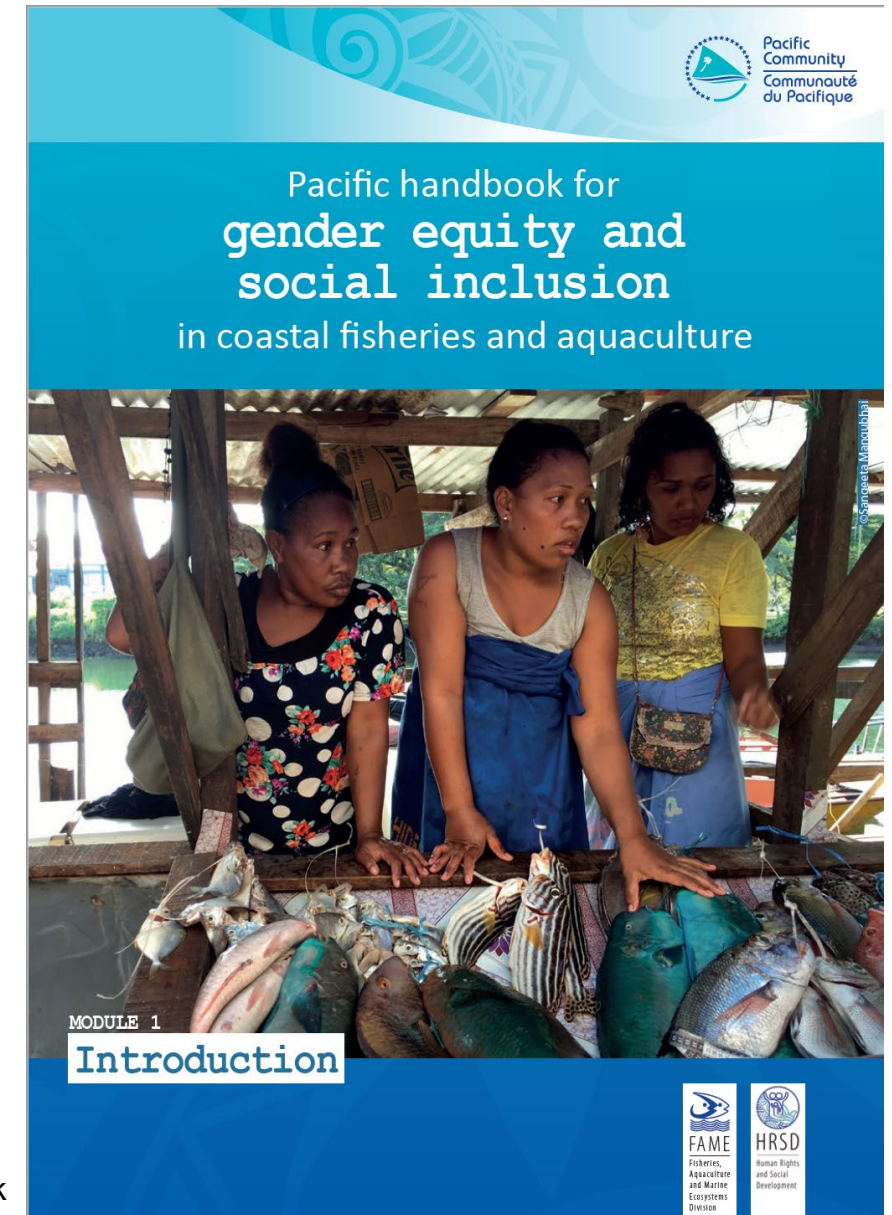
Background

Pacific Handbook for Gender Equity and Social Inclusion in **Coastal Fisheries** and Aquaculture

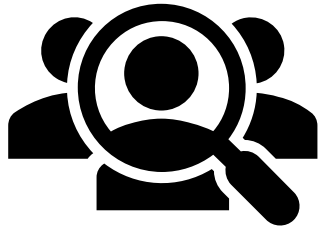
Impetus to work on human rights, gender equity in tuna industries

First a module, then a separate handbook for tuna

<https://coastfish.spc.int/en/component/content/article/494-gender-equity-and-social-inclusion-handbook>



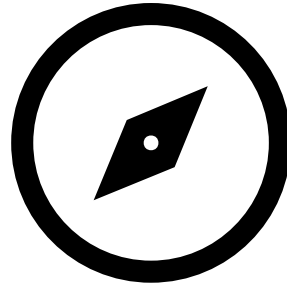
Aims of project



Audience

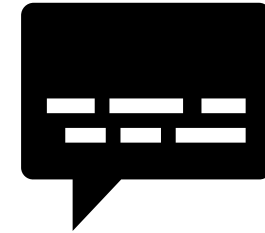
Tuna fisheries managers in Pacific Islands agencies

Related organisations: regional fisheries, maritime colleges and universities, tuna industries, civil society



Practical 'how to'

For fisheries managers who need/want to address these issues in their work



Research/practice translation

Building on what already exists

Bringing together information in one source, showing connections

Process – socialization/collaboration is vital

<p>Draft module</p> <p>2020</p> <p>40pp</p>	<p>Inception meetings</p> <p>2021</p> <p>Determine plans, socialisation</p>	<p>Stakeholder meetings</p> <p>2021</p> <p>Interviews, some new information/ideas, socialisation</p>
<p>Document review</p> <p>2020-2021</p>	<p>Drafting</p> <p>2021</p> <p>Draft 1 – internal review</p> <p>Draft 2 – internal & external review</p>	<p>Stakeholder workshop</p> <p>21-22 April 2022</p> <p>Draft 3 – final 1 June 2022</p>

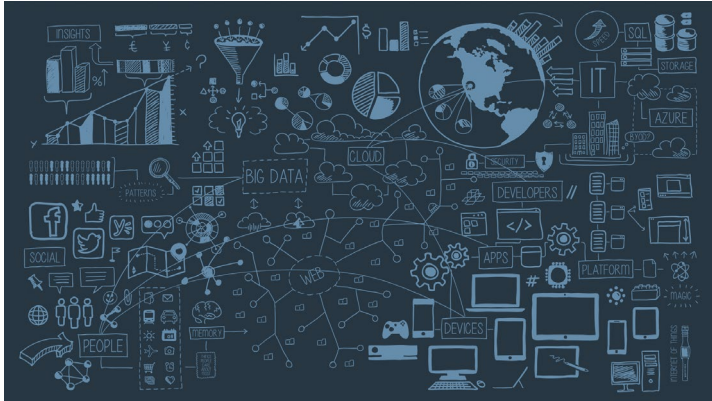
 SPC Pasifika AV - Floor	 Kate Barclay - University of Technology Sydney	 Senoveva Mauli	 Paefou Panapa	 Lotus Pacifica Conference Room
 Veronika Manoa PIFS	 PW_Kathy Sisor	 Zz FFA Penny Matautia	 VMC Vanuatu Richard Coleman	 Clare Tutuana-PNG FIA
 Aliti Vunisea	 TO - Tonga Fisheries	 MTC	 Natalie Makhoul	 Delwyn Amoe
 SPC -Josephine Kalsuak	 SPC_Margaret Fox	 zFFA-Anama Solofa	 Berry Muller	 Vindiya Lal
 Alexis Wolfgramm	 ambrose.orianihaa	 Katafono, Surkafa	 Megan Streeter	
			 SPC Pasifika - PPT	

Overview of modules

1. Introduction
2. Social analysis + monitoring evaluation & learning (MEL)
3. HR & GSI at sea
4. HR & GSI in port areas
5. HR & GSI in onshore processing
6. HR & GSI in informal small-scale sector
7. HR & GSI in fisheries management & science
8. Stakeholder engagement for HR & GSI in tuna industries
9. Fiji case study



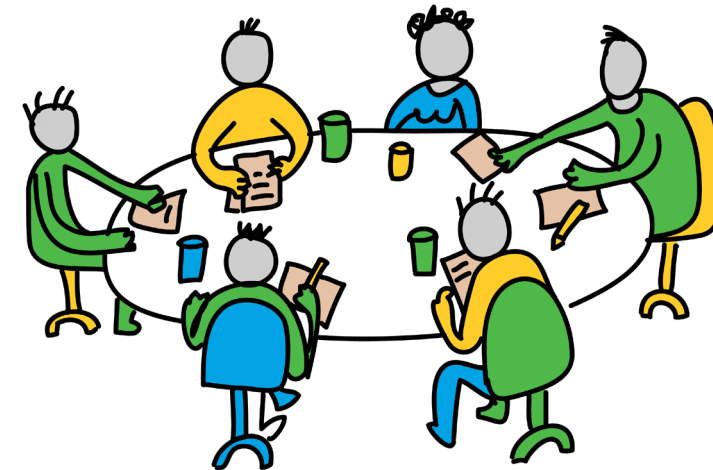
Key take-aways



Data, monitoring, reporting

HR & GESI both suffer from lack of data

FFA S+E indicator framework project



Collaboration

Fisheries agencies, labour departments/ministries, gender agencies, companies, unions, certifiers (MSC, Fair Trade), NGOs, experts

Eg – protocols for handling complaints, crew fleeing abuse, stranded crew



Thank you for listening!
Tell me what you think.
Questions?

Kate.Barclay@uts.edu.au