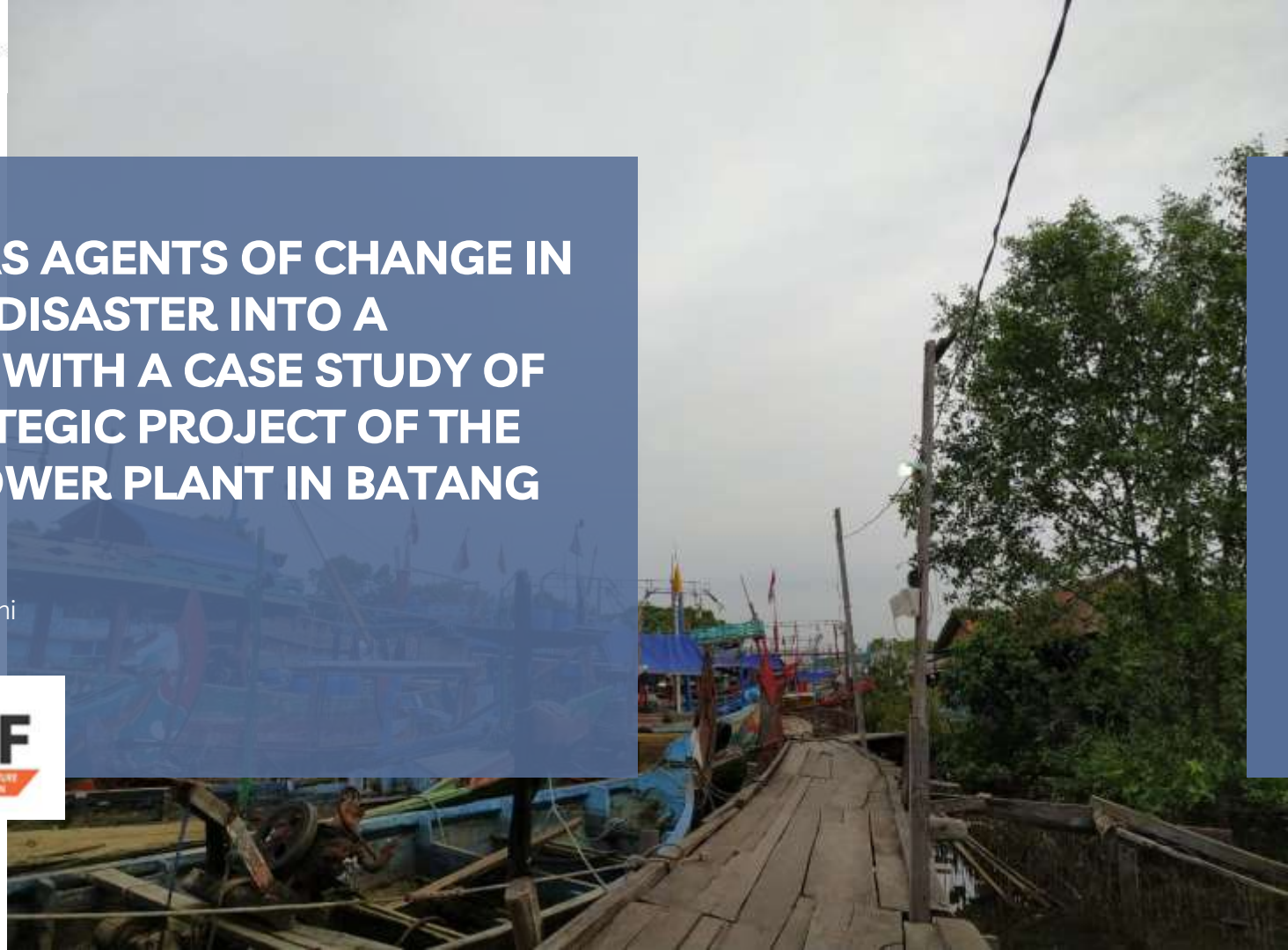




WOMEN AS AGENTS OF CHANGE IN TURNING DISASTER INTO A BLESSING WITH A CASE STUDY OF THE STRATEGIC PROJECT OF THE STEAM POWER PLANT IN BATANG REGENCY

Arisanti Ayu Wardhani
Indah Susilowati



Acknowledgment

1. Our deep appreciation are accorded to organizer : Special thanks to GAF 8



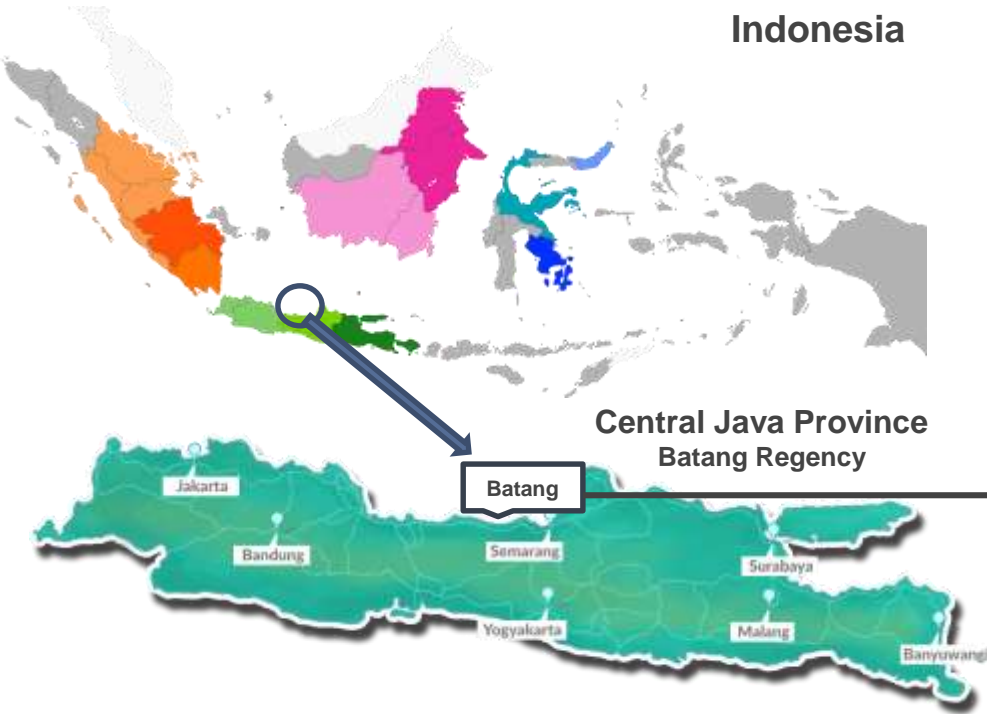
2. Thanks to Dr Nikita Gopal (Chair of GAF) and Dr Kyoko Kusakabe (Vice chair of GAF)
3. Thanks to Dr Meryl J Williams (Past Chair of GAF)
4. Thank to ACIAR for the sponsorship
5. Thanks to Ministry of Education, Culture, Research and Technology for the support of this research (Master's thesis scheme)
6. Thanks to Prof. Indah Susilowati as Supervisor.



Map of Study

Indonesia

Steam Power Plant





Key Words

01

Gender

02

Social Conflict

03

Steam Power Plant

04

**Turning Disaster
Into Blessing**



Background



High demand for electricity

The demand for electricity supply on the island of Java is always increasing. To fulfill this increased need, the Indonesian government launched a national strategic program to construct a steam power plant in Batang (Purnomo 2020).



The steam power plant program was resist by the community

The resistance was motivated by the fear that the community would lose their livelihood, especially fishers (Purnomo, 2020).



Role of women

The decline in catch yields has reduced the fishers economy, forcing the fishers wives to play a triple role (Wardhani 2021). Women's triple role help them to adapt on changes in their environment.





THE OBJECTIVE OF THIS STUDY

1

To find out the impact of steam power plant construction on fishers in Roban village, Batang Regency

2

The role of women in adapting to environmental changes due to the construction of steam power plants



Material and Method

Study Area

Roban Village
Batang Regency, Central Java Province

Data & Sampling

Data:

Primary Data

(questionnaires face to face in-depth interviews with key informant)

Informant:

Women, residing in Roban Village.

Sampling:

Snowballing Sampling

Tools of Analysis

Qualitative

Qualitative descriptive

Atlas Ti

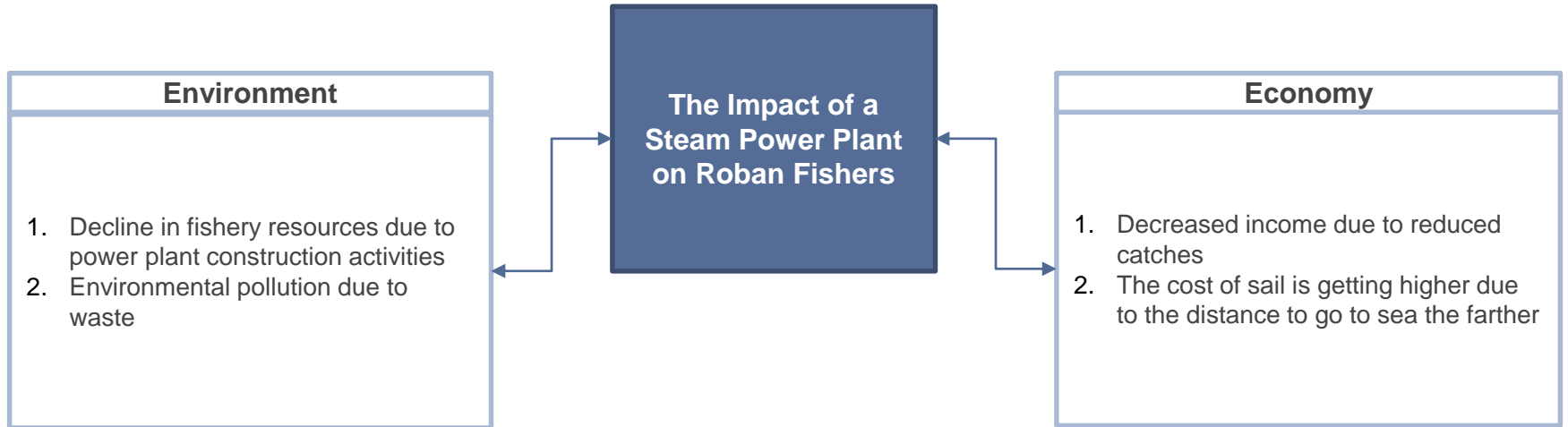
Related Study

1. Wollack, K. (2019).
Women as agents of change: Advancing the role of women in politics and civil society.
2. Widhyharto, D. S (2015)
Women as Agents Socio-Economic Change Neighboring Coastal Communities Plth (Power Plant Hybrid Power) New Beach, Bantul Regency, Region Yogyakarta Special
3. Patti Petesch (2020)
Women's Empowerment Arising From Violent Conflict And Recovery

The Impact of the steam power plant Construction on Fishers in Roban Village, Batang Regency

- ❖ Construction of a steam power plant located in area that have high fishery resources and a important location for roban fishers to catch fish.
- ❖ The majority of roban fishers are traditional fishers who still use simple fishing equipment. With the limitation of fishing locations, roban fishers experience a decrease in their catch which has an impact on their economic conditions.
- ❖ The loss of their fishing grounds has forced the roban fishers to sail farther than before, so they have to incur higher costs than before.





The role of women in adapting to environmental changes due to the construction of steam power plants



processing
fishery products **80%**

Before the existence of the power plant, the majority of women in Roban Village had side jobs and the largest was **processing fishery products**, with the most fish processed product is salted fish

Women also have a role in selling the catch obtained by their husbands at the fish auction held at the Roban fish auction site (TPI).





open a restaurant
open laundry
opened a grocery store
catering business
make shrimp paste

Source : primary data processed with atlas.ti, 2022

- ❖ After the construction of the power plant was running, women of Roban Village began looking for new alternative income outside fishing sector.
- ❖ **Opening a restaurant** is a new economic alternative that many women choose. their daily income is IDR 250,000 - IDR 300,000 (15 to 19 USD)

women began to see new economic potential in the tourism sector

With assistance from the management the power plant, women receive facilities in the development of Pesona Indah Beach tourism



Tourism development begins with the formation of a tourism awareness group (Pokdarwis) called "Pokdarwis Pesona Indah"



Roban women develop mangrove cultivation

- ❑ Women with financial assistance from power plant management started to cultivate mangroves.
- ❑ Mangrove cultivation communities run by roban women become suppliers for companies and governments that have beach greening programs.
- ❑ The majority of activity actors in this community are women with a wage of IDR 60,000 (4 USD).





Conclusion

1. The decline in catches has had an impact on the economy of the roban fishers which has become unstable
2. Women have an important role in adaptation, especially in creating new economic opportunities, which can increase family economic stability

The Autors



Arisanti Ayu Wardhani



Masters Program in Economics,
Faculty of Economics and Business,
Diponegoro University,



arisantiayu98@gmail.com



+628986156212



Prof. Dra. Indah Susilowati, M.Sc., Ph.D



Lecturer at Faculty of Economics and
Business, Diponegoro University



prof.indah@gmail.com



+62 82133221155

wonderful
indonesia



THANKS

